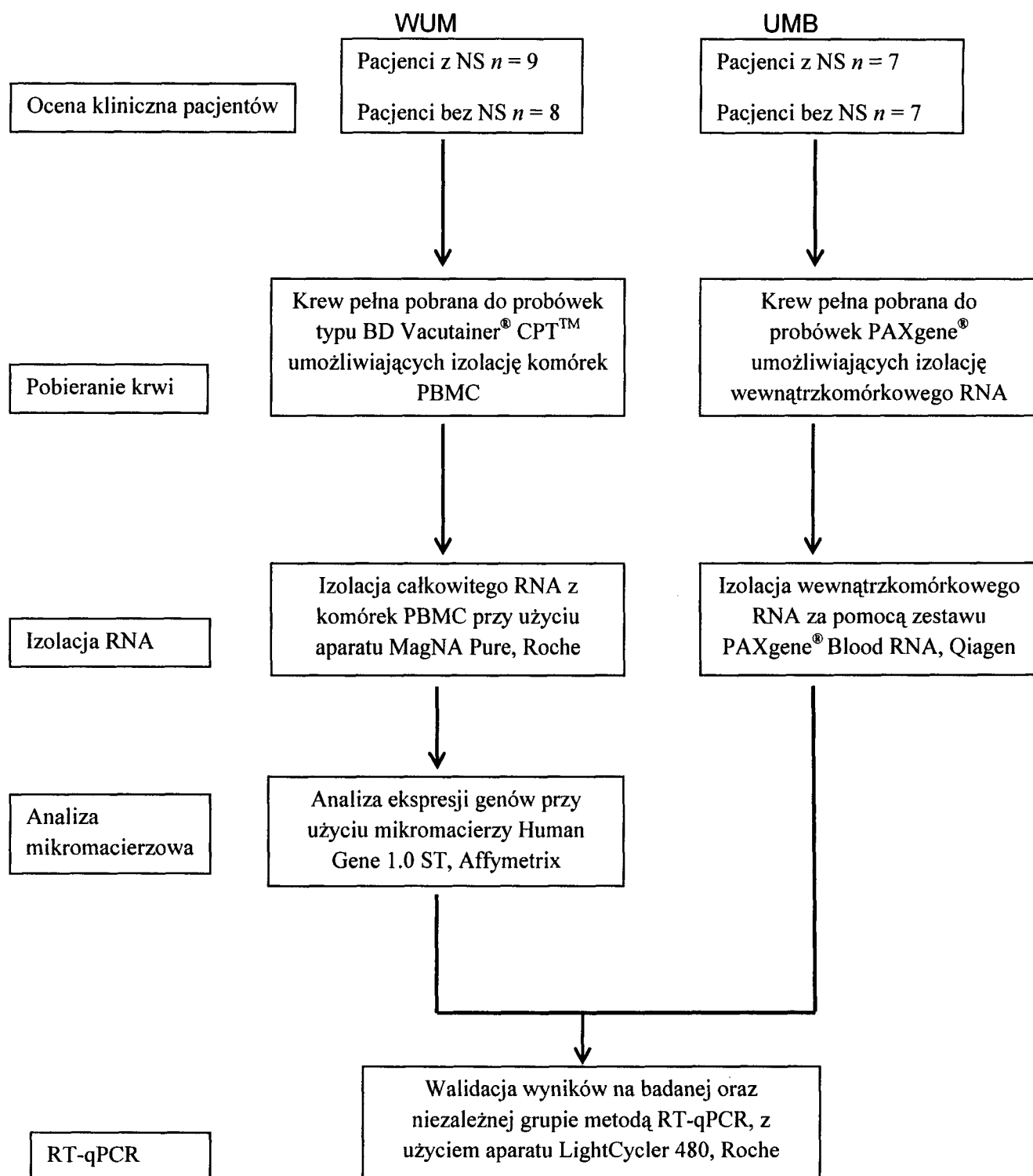


Fig. 1



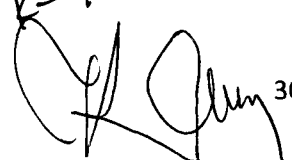
K-4413p/14

 30

Fig. 2.

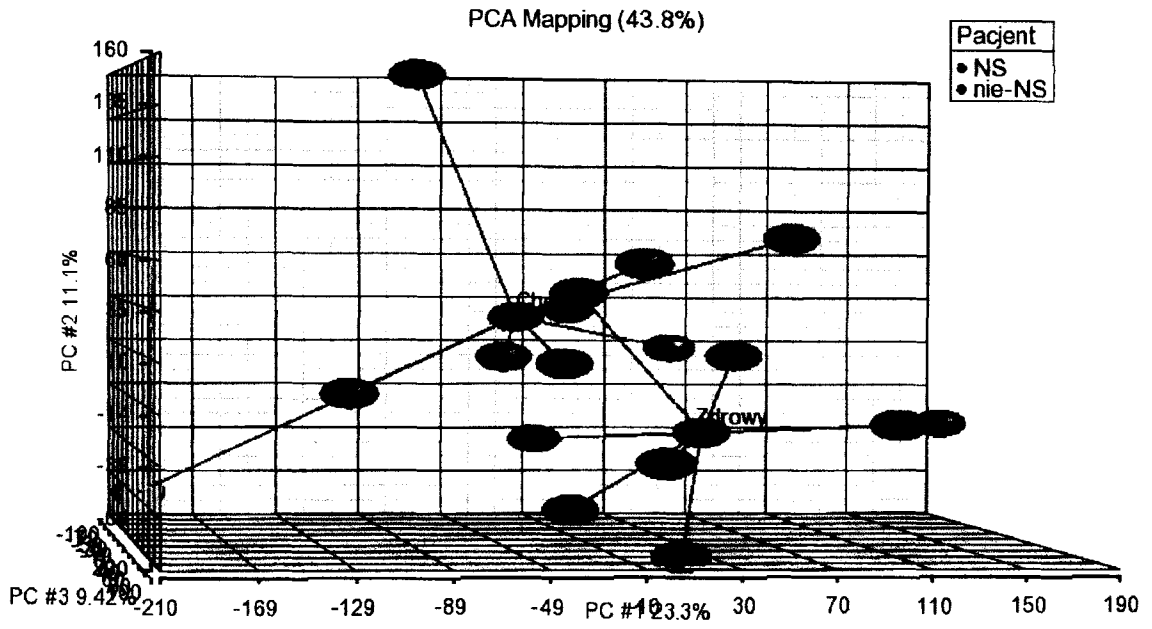
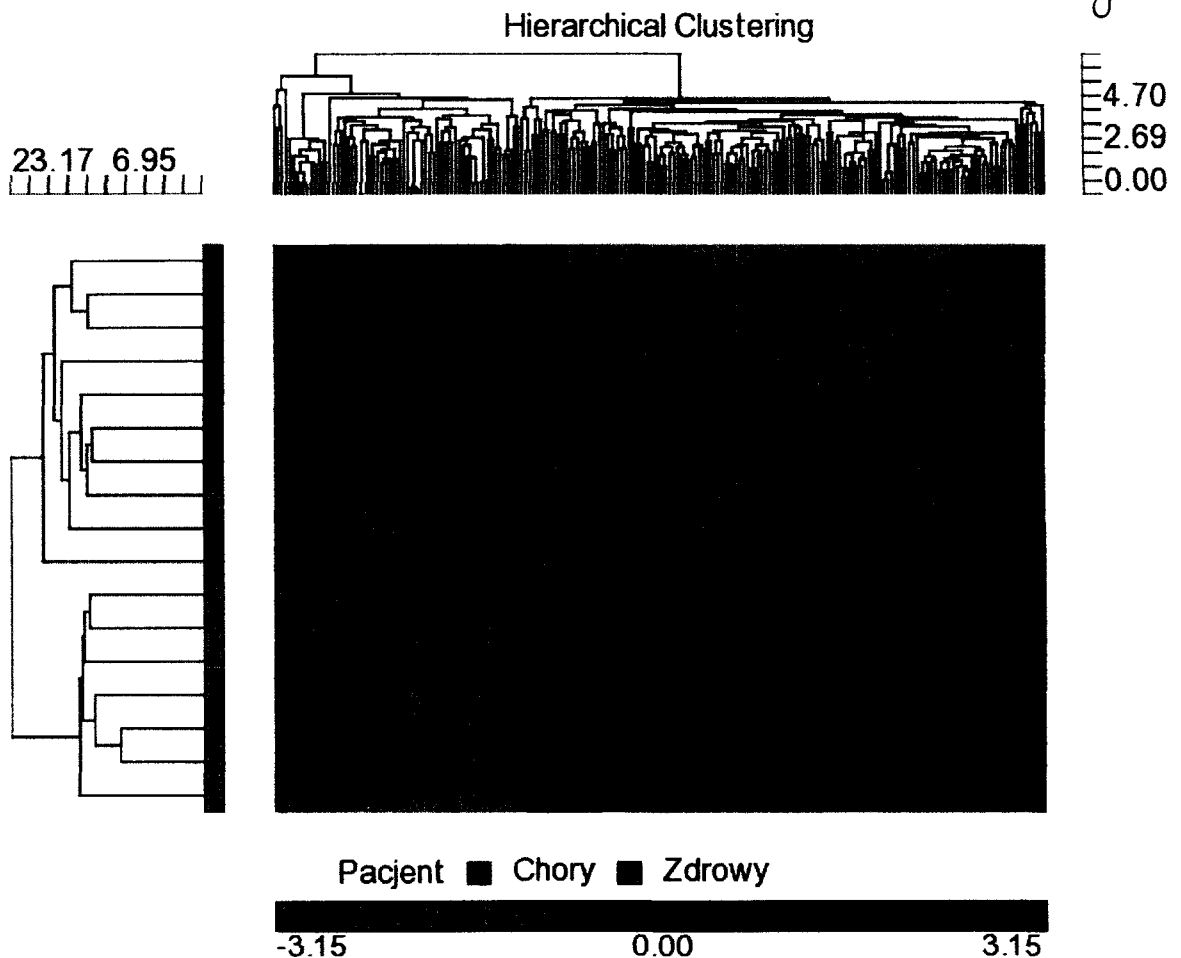


Fig. 3.

K-4413p/1A

[Signature]


31



Referencje:

1. Czech M, Opolski G, Zdrojewski T, Dubiel JS, Wizner B, Bolisęga D, Fedyk-Łukasik M, Grodzicki T. The costs of heart failure in Poland from the public payer's perspective. Polish programme assessing diagnostic procedures, treatment and costs in patients with heart failure in randomly selected outpatient clinics and hospitals at different levels of care: POLKARD. *Kardiol Pol.* 2013;71(3):224-32.
2. Anwaruddin S, Askari AT, Topol EJ. Redefining risk in acute coronary syndromes using molecular medicine. *J Am Coll Cardiol.* 2007; 49(3):279-89.
3. Horne BD, Carlquist JF, Muhlestein JB, Nicholas ZP, Anderson JL; Intermountain Heart Collaborative Study Group. Associations with myocardial infarction of six polymorphisms selected from a three-stage genome-wide association study. *J. Am Heart* 2007; 154(5):969-75.

K-4413p/14
[Signature]

- 
4. Madjid M, Awan I, Willerson JT, Casscells SW. Leukocyte count and coronary heart disease: implications for risk assessment. *J Am Coll Cardiol* 2004; 44(10):1945-56.
 5. Iqbal N, Wentworth B, Choudhary R, Landa Ade L, Kipper B, Fard A, Maisel AS. Cardiac biomarkers: new tools for heart failure management. *Cardiovasc Diagn Ther.* 2012; 2(2):147-64.
 6. Cohn JN, Ferrari R, Sharpe N. Cardiac remodeling: concepts and clinical implications. A consensus paper from an international forum on cardiac remodeling. *J Am Coll Cardiol.* 2000; 35:569–582.
 7. Savoye Ch, Equine O, Tricot O, et al. Left Ventricular Remodeling After Anterior Wall Acute Myocardial Infarction in Modern Clinical Practice (from the REmodelage VEntriculaire [REVE] Study Group). *Am J Cardiol* 2006; 98:1144 – 1149.
 8. Sinnaeve, P.R.; Donahue, M.P.; Grass, P.; Seo, D.; Vonderscher, J.; Chibout, S.D.; Kraus, W.E.; Sketch, M.; Nelson, C.; Ginsburg, G.S.; Goldschmidt-Clermont, P.J.; Granger, C.B. Gene expression patterns in peripheral blood correlate with the extent of coronary artery disease. *PLoS One.* 2009, 4(9), e7037.
 9. Joehanes R, Johnson AD, Barb JJ, Raghavachari N, Liu P, Woodhouse KA, O'Donnell CJ, Munson PJ, Levy D. Gene expression analysis of whole blood, peripheral blood mononuclear cells, and lymphoblastoid cell lines from the Framingham Heart Study. *Physiol Genomics.* 2012; 44(1):59-75.
 10. Barton PJ, Birks EJ, Felkin LE, Cullen ME, Koban MU, Yacoub MH. Increased expression of extracellular matrix regulators TIMP1 and MMP1 in deteriorating heart failure. *J Heart Lung Transplant.* 2003; 22(7):738-44.
 11. Polyakova V, Loeffler I, Hein S, Miyagawa S, Piotrowska I, Dammer S, Risteli J, Schaper J, Kostin S. Fibrosis in endstage human heart failure: severe changes in collagen metabolism and MMP/TIMP profiles. *Int J Cardiol.* 2011; 151(1):18-33.
 12. Ahmed SH, Clark LL, Pennington WR, Webb CS, Bonnema DD, Leonardi AH, McClure CD, Spinale FG, Zile MR. Matrix metalloproteinases/tissue inhibitors of

metalloproteinases: relationship between changes in proteolytic determinants of matrix composition and structural, functional, and clinical manifestations of hypertensive heart disease. *Circulation*. 2006; 113(17):2089-96.

13. Vo TK, de Saint-Hubert M, Morrhaye G, Godard P, Geenen V, Martens HJ, Debacq-Chainiaux F, Swine C, Toussaint O. Transcriptomic biomarkers of the response of hospitalized geriatric patients admitted with heart failure. Comparison to hospitalized geriatric patients with infectious diseases or hip fracture. *Mech Ageing Dev*. 2011; 132(3):131-9.

14. Yang D, Chen Q, Rosenberg HF, Rybak SM, Newton DL, Wang ZY, Fu Q, Tchernev VT, Wang M, Schweitzer B, Kingsmore SF, Patel DD, Oppenheim JJ, Howard OM. Human ribonuclease A superfamily members, eosinophil-derived neurotoxin and pancreatic ribonuclease, induce dendritic cell maturation and activation. *J Immunol*. 2004; 173(10):6134-42.

15. Shaulian E., Karin M.: AP-1 as a regulator of cell life and death. *Nat. Cell Biol.*, 2002; 4: E131–E136.

16. Katz S, Heinrich R, Aronheim A. The AP-1 repressor, JDP2, is a bona fide substrate for the c-Jun N-terminal kinase. *FEBS Lett*. 2001; 506(3):196-200.

17. Sugden PH. Signalling pathways in cardiac myocyte hypertrophy. *Ann Med*. 2001; 33(9):611-22.

18. Hill C, Würfel A, Heger J, Meyering B, Schlüter KD, Weber M, Ferdinandy P, Aronheim A, Schulz R, Euler G. Inhibition of AP-1 signaling by JDP2 overexpression protects cardiomyocytes against hypertrophy and apoptosis induction. *Cardiovasc Res*. 2013; 99(1):121-8.

19. Surma M, Wei L, Shi J. Rho kinase as a therapeutic target in cardiovascular disease. *Future Cardiol*. 2011; 7(5):657-71.

20. Young KG, Copeland JW. Formins in cell signaling. *Biochim Biophys Acta*. 2010; 1803(2):183-90.